



# Material Handling Equipment

## EGV EPH Electric Stackers

1



EGV EPH 1230



### *silberblau* WALKER LIGHT EGV EPH 12...

#### Electrical drive and electrical lifting

This robust heavy athlete among lifting systems does not let you down when loaded with up to 1200 kg. During transporting on difficult ground it levels up all kinds of uneven ground and holes due to its clearance of 30 mm from the upper and lower side. Being a part of an intelligent and comprehensive concept WALKER LIGHT does not only lift heavy loads but also ensures operator comfort: an ergonomically-designed steering handle with its easy-to-use controls provides smooth and tireless operation.

### *silberblau* WALKER HEAVY EGV EPH 16...

#### Electrical drive and electrical lifting

There are important arguments speaking for the WALKER HEAVY electric stacker, like lifting capacity of 1600 kg or optionally lifting heights of 2500 mm, 3000 mm, 3500 mm or 4000 mm. The high-performance battery with tubular positive plates with 24 V/160 Ah up to 320 Ah guarantees a very long service life. And if you think that's not enough, we recommend our special purpose models – ready for 2000 kg and 3000 kg loading capacity, triplex masts, initial or complete free lift, 4-way-system, counterweight- or wide-gauge models and, and and.....

Please do not hesitate to contact us!



EGV EPH 1230

# Material Handling Equipment



## EGV EPH Electric Stackers

1

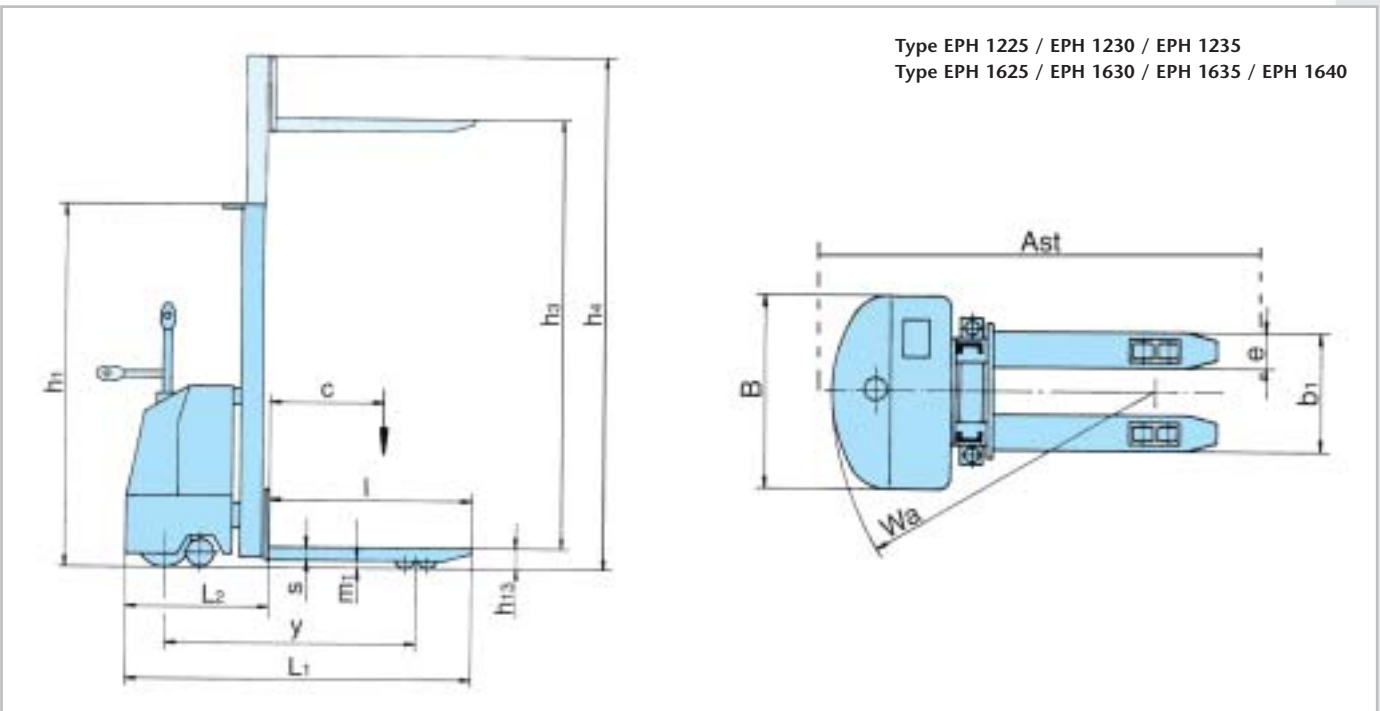


EGV EPH 1635



EGV EPH 1635

Charts see page 40





# Material Handling Equipment

## EGV EPH Electric Stackers

1

Type Art. No.		EGV EPH 1225 034554040	EGV EPH 1230 034554041	EGV EPH 1235 034554042
Lifting capacity up to 2,5 m lifting height in t		1,2	1,2	1,2
Residual carrying capacity in t		1,2	1,0	0,8
Steering-/load wheels*		SR/PUR/PUR	SR/PUR/PUR	SR/PUR/PUR
Wheel size front in mm		220x100/150x40	220x100/150x40	220x100/150x40
Load wheel size rear in mm		82x80	82x80	82x80
Number of wheels front/rear X = actuated		1X+2/2	1X+2/2	1X+2/2
Height of lifting system, retracted in mm	h <sub>1</sub>	1740	1998	2250
Load center in mm	c	600	600	600
Free lift in mm	h <sub>2</sub>	-	-	-
Lifting height in mm	h <sub>3</sub>	2415	2915	3415
Height of lifting system, extended in mm	h <sub>4</sub>	2950	3450	4040
Wheelbase in mm	y	1270	1270	1270
Fork height max. in mm	h <sub>3</sub> +h <sub>13</sub>	2500	3000	3500
Fork height lowered in mm	h <sub>13</sub>	85	85	85
Total length in mm	L <sub>1</sub>	1980	1980	1980
Headlength in mm	L <sub>2</sub>	800	800	800
Total width in mm	B	850	850	850
Fork length in mm	l	1180	1180	1180
Fork width x height in mm	e x s	160x65	160x65	160x65
Carrying fork width in mm	b <sub>1</sub>	540	540	540
Floor/ground clearance in mm	m <sub>1</sub>	20	20	20
Aisle width for euro pallets in mm	Ast	2250	2250	2250
Turning radius in mm	Wa	1450	1450	1450
Drive speed loaded/unloaded in km/h		5/6	5/6	5/6
Lifting speed loaded/unloaded in m/s		0,05/0,09	0,05/0,09	0,05/0,09
Lowering speed loaded/unloaded in m/s		0,07/0,10	0,07/0,10	0,07/0,10
Max. gradient loaded/unloaded in %		5/10	5/10	5/10
Drive motor rating in kW		1,2	1,2	1,2
Lift motor rating in kW		2,2	2,2	2,2
Battery according to DIN 43531		PzS	PzS	PzS
Nominal battery voltage in V/Ah		24/160	24/160	24/160
Battery charger in V/A		24/30	24/30	24/30
Weight incl. battery in kg		648	678	708

Type Art. No.		EGV EPH 1625 034554050	EGV EPH 1630 034554051	EGV EPH 1635 034554052	EGV EPH 1640 034554053
Lifting capacity up to 2,5 m lifting height in t		1,6	1,6	1,6	1,6
Residual carrying capacity in t		1,6	1,3	1,1	0,9
Steering-/load wheels*		SR/PUR/PUR	SR/PUR/PUR	SR/PUR/PUR	SR/PUR/PUR
Wheel size front in mm		220x100/150x50	220x100/150x50	220x100/150x50	220x100/150x50
Load wheel size rear in mm		82x60	82x60	82x60	82x60
Number of wheels front/rear X = actuated		1X+2/4	1X+2/4	1X+2/4	1X+2/4
Height of lifting system, retracted in mm	h <sub>1</sub>	1770	2020	2270	2520
Load center in mm	c	600	600	600	600
Free lift in mm	h <sub>2</sub>	-	-	-	-
Lifting height in mm	h <sub>3</sub>	2415	2915	3415	3915
Height of lifting system, extended in mm	h <sub>4</sub>	2970	3470	3970	4470
Wheelbase in mm	y	1330	1330	1330	1330
Fork height max. in mm	h <sub>3</sub> +h <sub>13</sub>	2500	3000	3500	4000
Fork height lowered in mm	h <sub>13</sub>	85	85	85	85
Total length in mm	L <sub>1</sub>	1960	1960	1960	1960
Headlength in mm	L <sub>2</sub>	810	810	810	810
Total width in mm	B	850	850	850	1050
Fork length in mm	l	1150	1150	1150	1150
Fork width x height in mm	e x s	178x60	178x60	178x60	178x60
Carrying fork width in mm	b <sub>1</sub>	560	560	560	560
Floor/ground clearance in mm	m <sub>1</sub>	25	25	25	25
Aisle width for euro pallets in mm	Ast	2250	2250	2250	2250
Turning radius in mm	Wa	1460	1460	1460	1460
Drive speed loaded/unloaded in km/h		5/6	5/6	5/6	5/6
Lifting speed loaded/unloaded in m/s		0,07/0,11	0,07/0,11	0,07/0,11	0,07/0,11
Lowering speed loaded/unloaded in m/s		0,06/0,11	0,06/0,11	0,06/0,11	0,06/0,11
Max. gradient loaded/unloaded in %		5/10	5/10	5/10	5/10
Drive motor rating in kW		1,2	1,2	1,2	1,2
Lift motor rating in kW		2,2	2,2	2,2	2,2
Battery according to DIN 43531		PzS	PzS	PzS	PzS
Nominal battery voltage in V/Ah		24/240	24/240	24/240	24/240
Battery charger in V/A		24/40	24/40	24/40	24/40
Weight incl. battery in kg		845	875	905	935

\* Solid Rubber (SR), Vulcanized Rubber (V), Polyurethane (PUR)